

# **The Teacher Shortage: A Case of Wrong Diagnosis and Wrong Prescription**

---

**Richard M. Ingersoll  
Professor of Education and Sociology  
University of Pennsylvania  
and  
Consortium for Policy Research in Education**



# The Source of Data

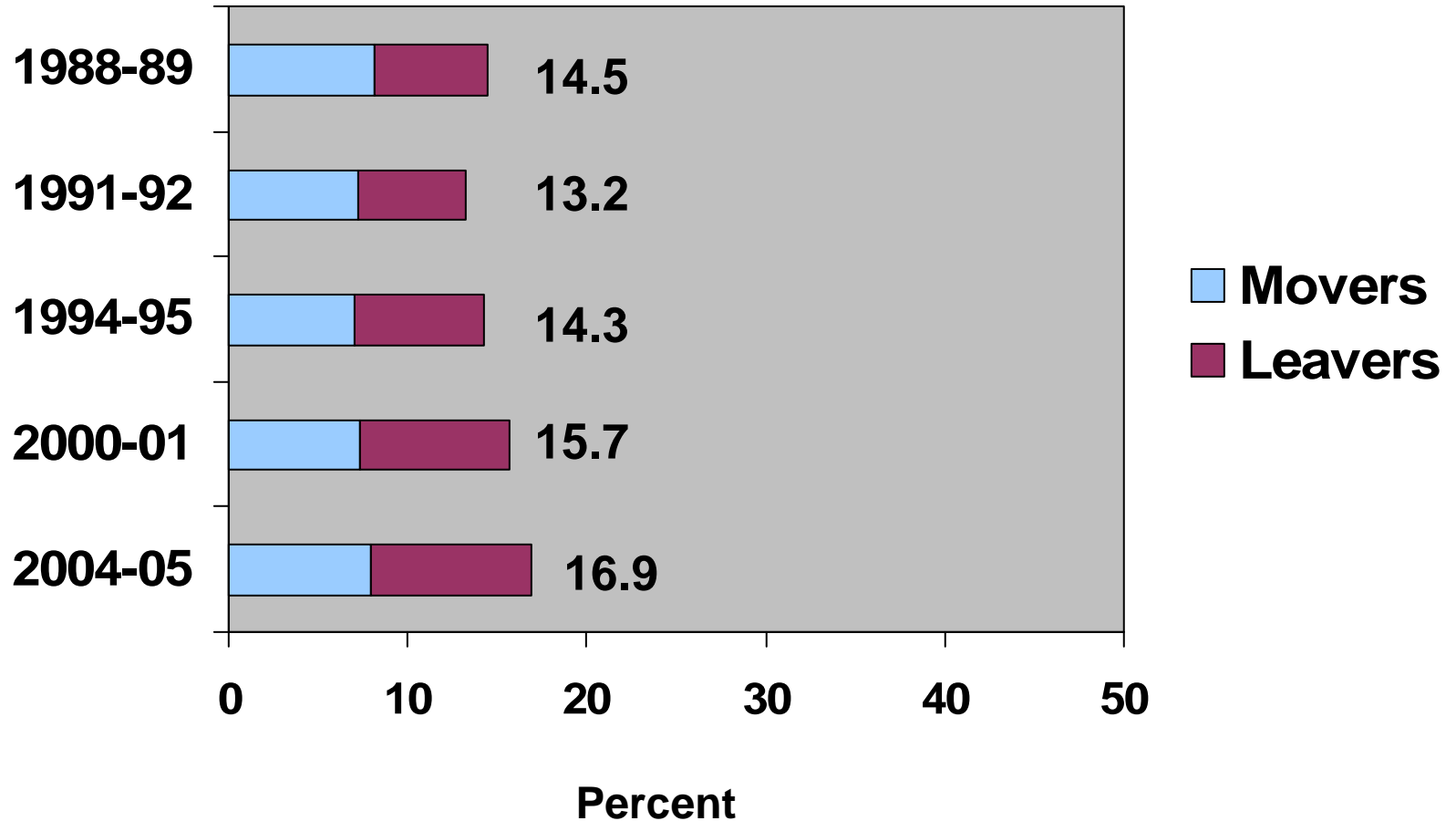
---

## The Schools and Staffing Survey with the Teacher Follow-up Survey

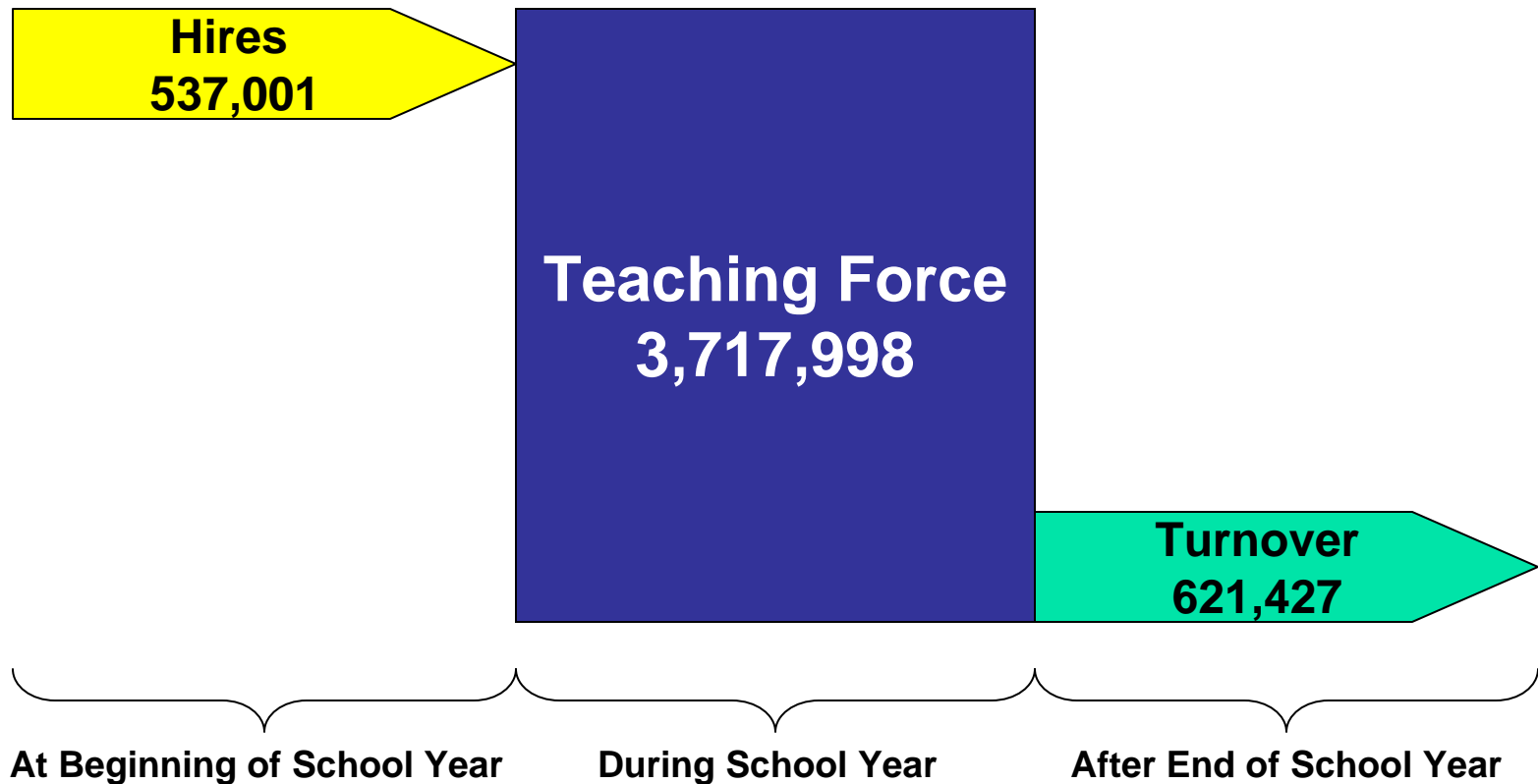
- **Conducted by the Census Bureau for the U.S. Department of Education**
- **5 Cycles: 1987-1989, 1990-1992, 1993-1995, 1999-2001, 2003-2005**
- **The largest source of information available on teachers:**
  - Sample: 52,000 teachers**  
**12,000 schools**
  - Representing all 50 states**



# Percent Annual Teacher Turnover, by Year

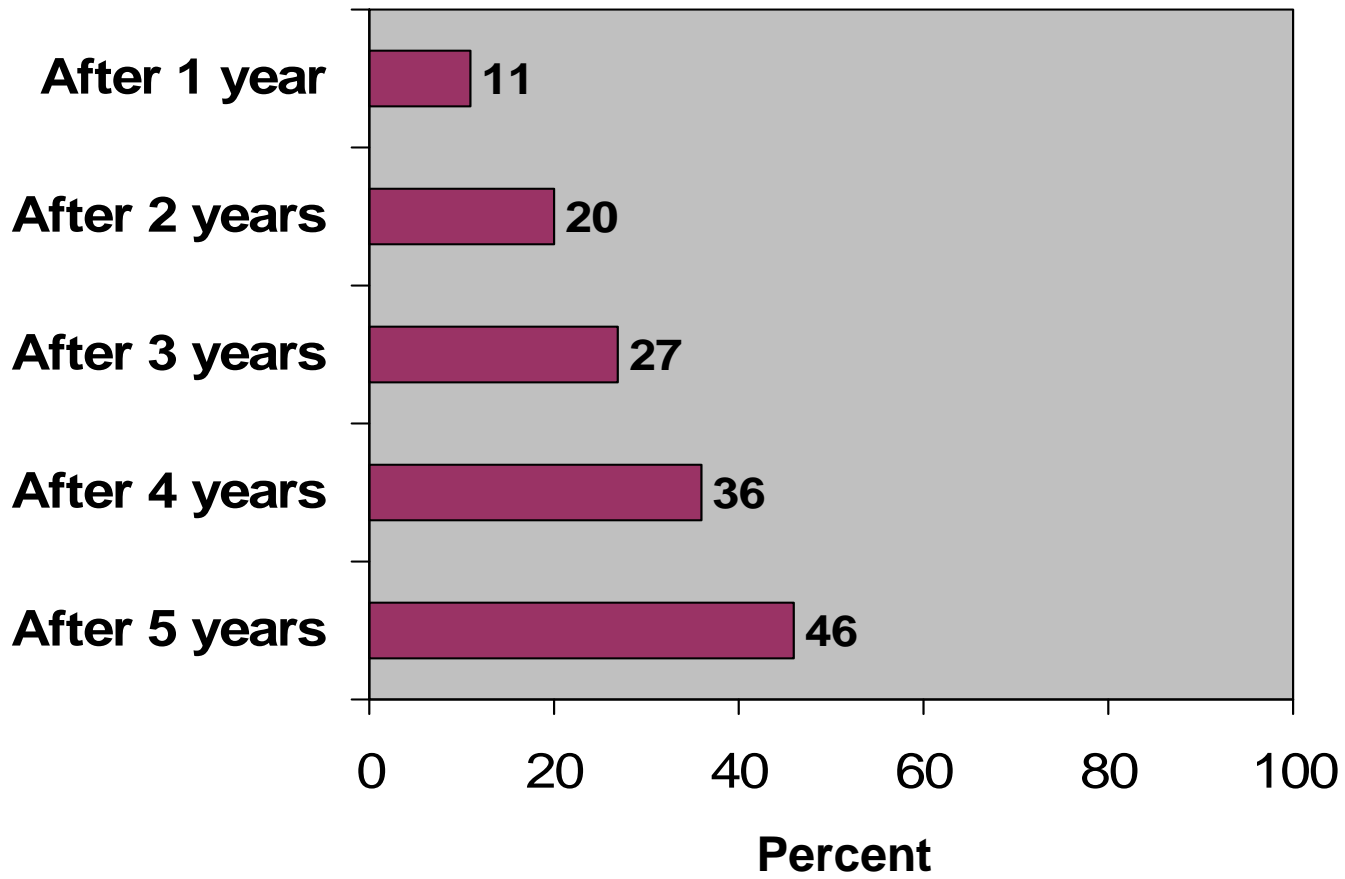


# Numbers of Teachers in Transition Before and After 2003-2004 School Year

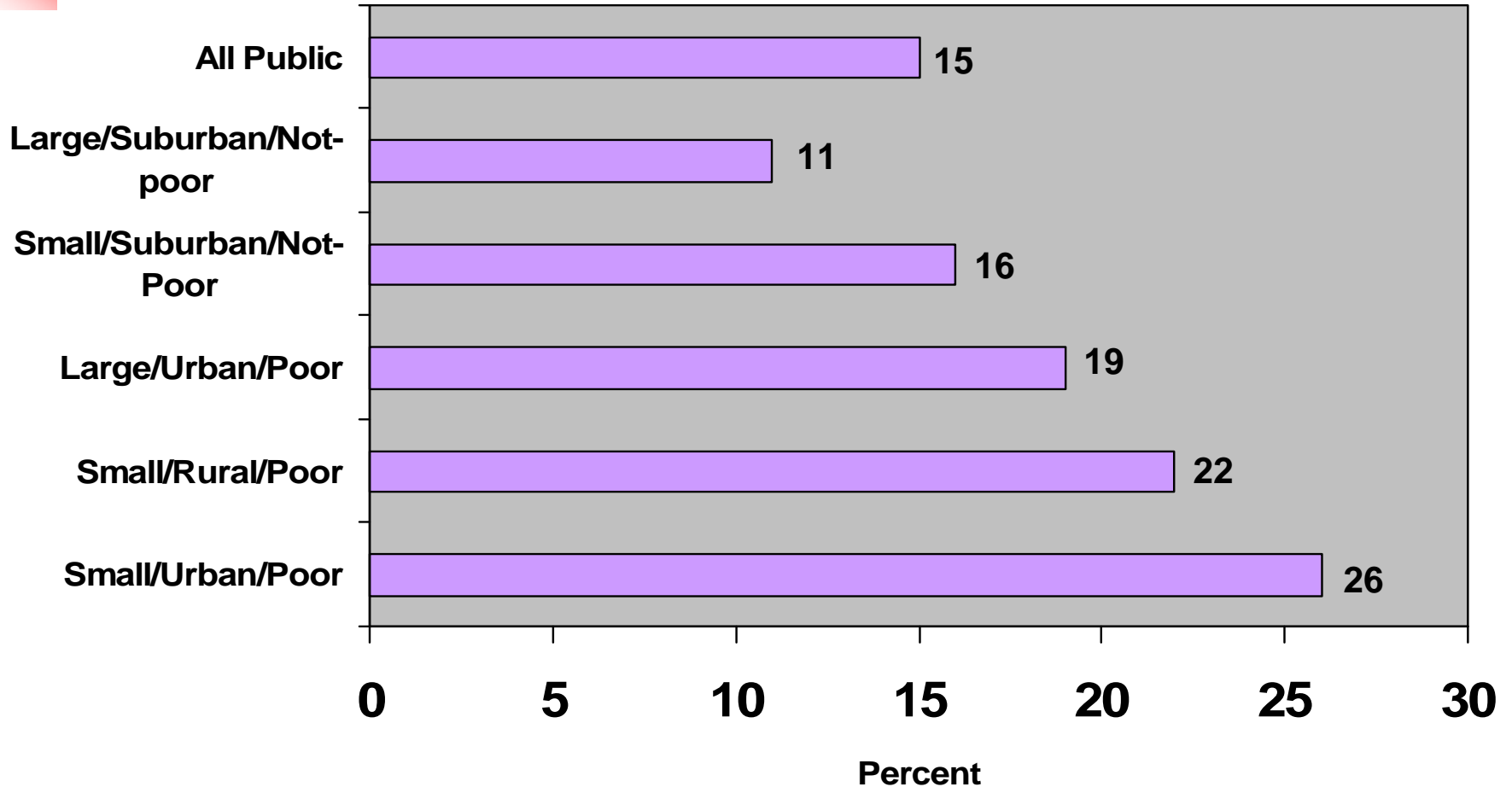




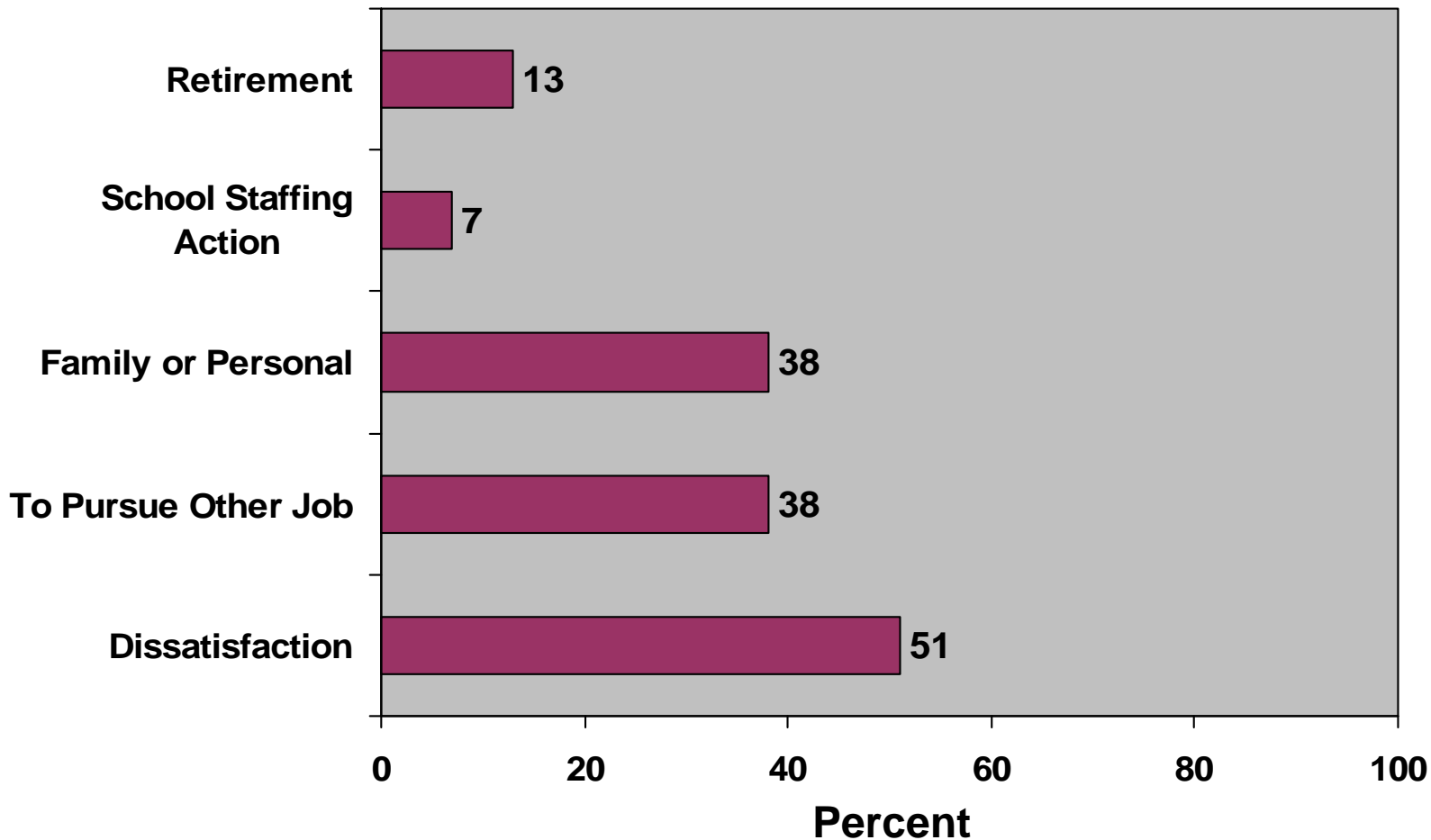
## Approximate Beginning Teacher Attrition (Cumulative Percent Teachers Having Left Teaching Occupation, by Years of Experience)



# Percent Annual Public School Teacher Turnover, by Selected School Characteristics (2000-2001)

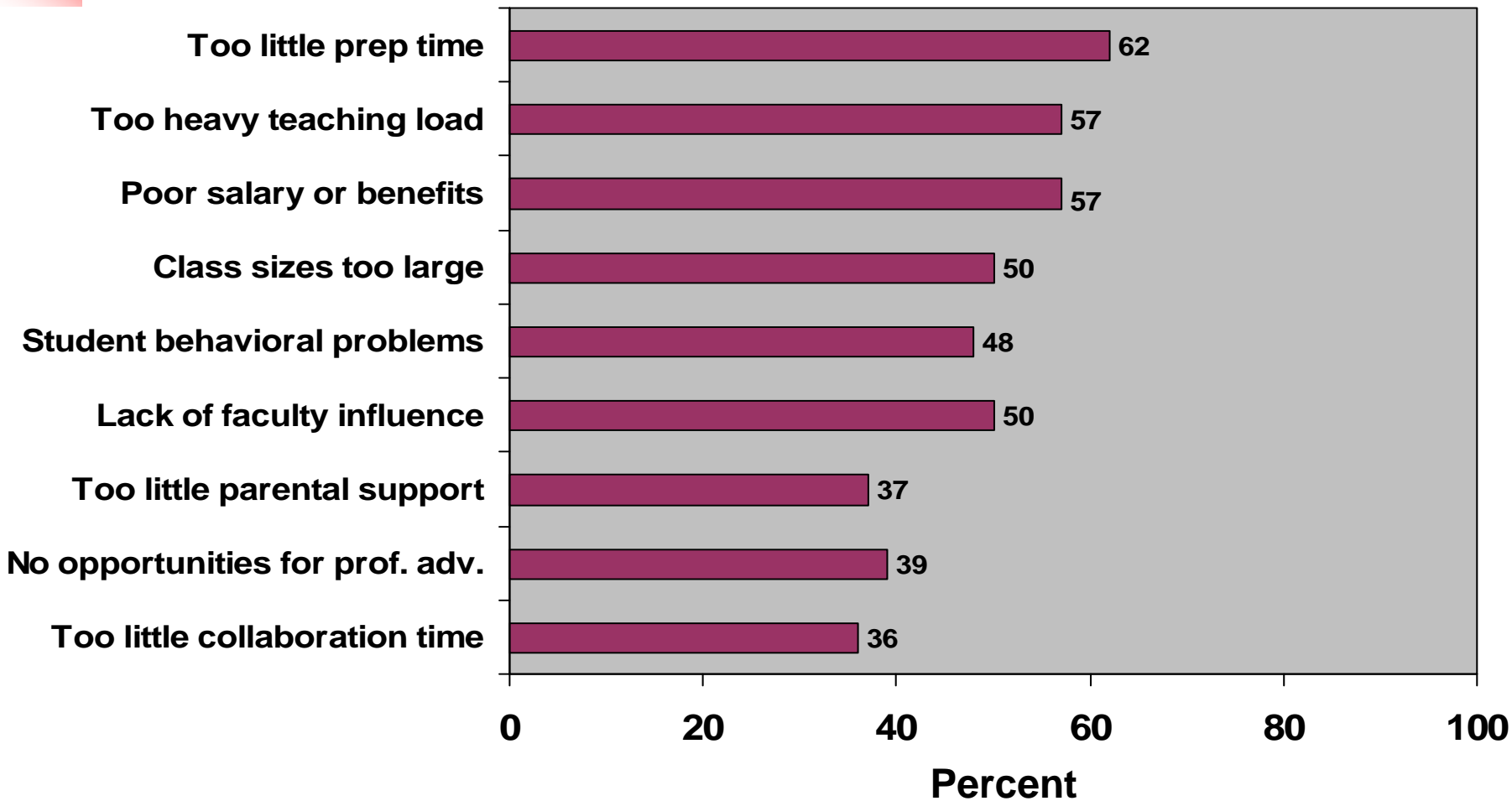


# Percent Teachers Reporting that Various Types of Reasons Were Important for their Turnover (2000-2001)

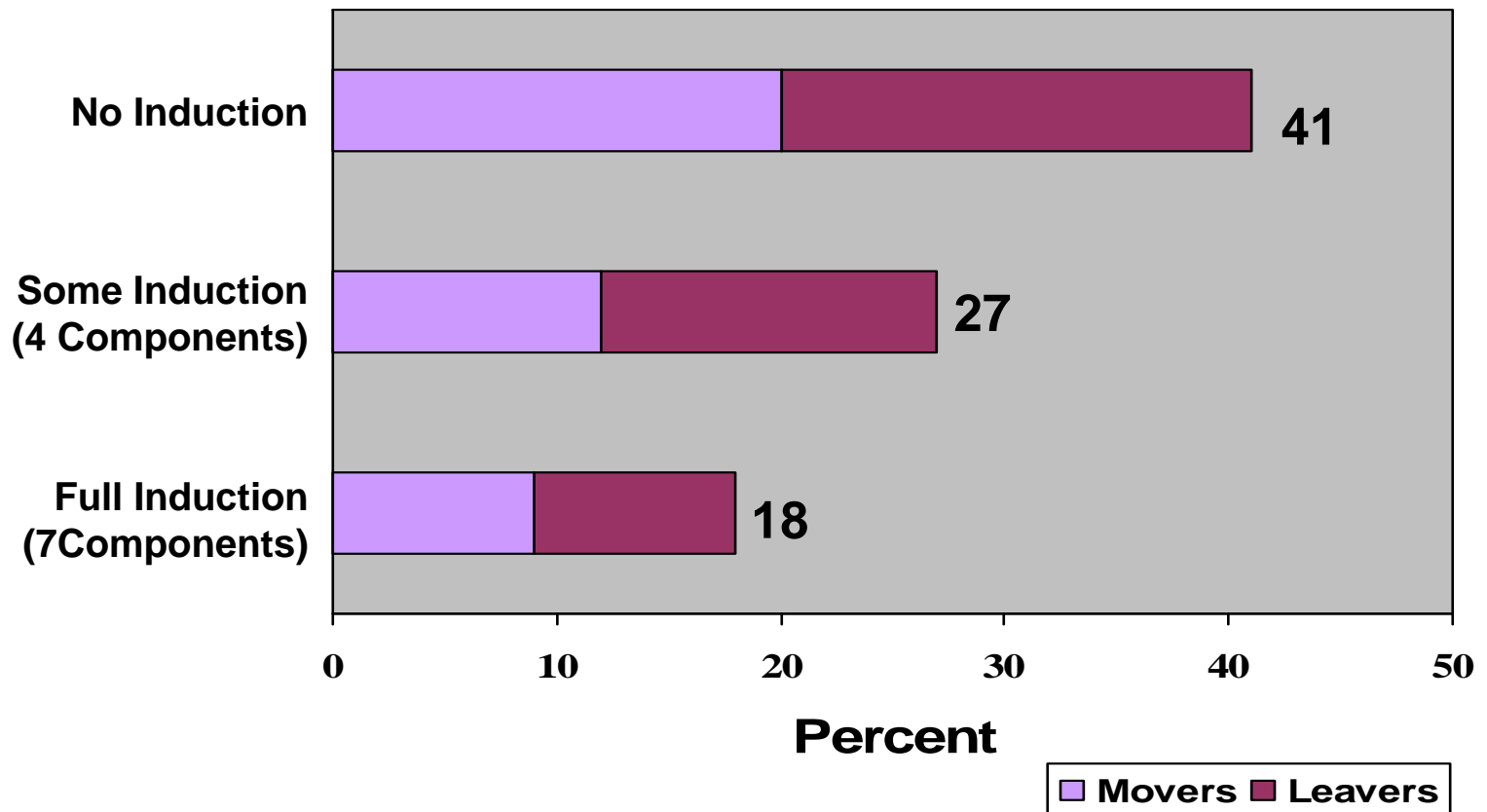




## Of Those Teachers Who Moved From or Left Their School, Percent Reporting Various Sources of Dissatisfaction (2000-2001)



# Percent Turnover After First Year of Beginning Teachers, According to Amount of Induction Support They Received (2000-2001)





## For Further Information, Copies of Articles, Reports, etc.:

---

- [www.gse.upenn.edu/faculty/ingersoll.html](http://www.gse.upenn.edu/faculty/ingersoll.html)

- [and a recent book:](#)

[Who Controls Teachers' Work? Power and  
Accountability in America's Schools.](#)

from Harvard University Press

[www.hup.harvard.edu/catalog/INGWHO.html](http://www.hup.harvard.edu/catalog/INGWHO.html)